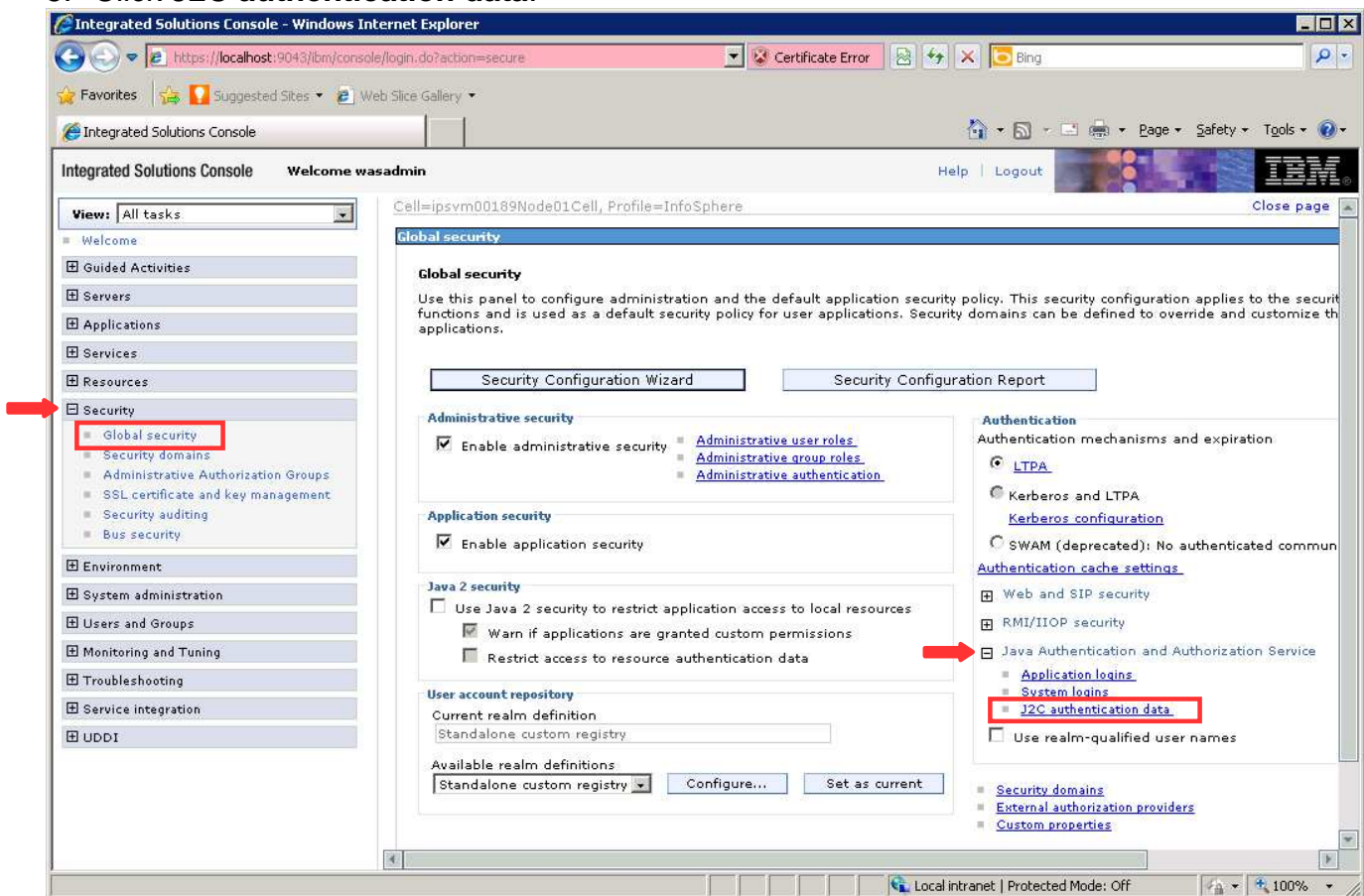


CREATING AUTHENTICATION DATA

Standardization Rules Designer data sources use JAAS (Java Authentication and Authorization Service) J2C (Java 2 Connector) authentication data for connection credentials. This data must be created before configuring Standardization Rules Designer data sources. Complete the following steps to create the JAAS J2C authentication data:

1. Login to the IBM WebSphere Application Server Administrative Console.
2. Expand the **Security** node in the left pane.
3. Click **Global Security**.
4. Expand the **Java Authentication and Authorization Service** node in the right pane.
5. Click **J2C authentication data**.



6. Uncheck **Prefix new alias names with the node name of the cell...**
7. Click **Apply**. Do not click **Save** at this time.
8. Click **New**.

Integrated Solutions Console - Windows Internet Explorer

https://localhost:9043/bm/console/login.do?action=secure

Integrated Solutions Console Welcome wasadmin

Cell=ipsvm00189Node01Cell, Profile=InfoSphere

Global security

Messages

- Changes have been made to your local configuration. You can:
 - Save directly to the master configuration.
 - Review changes before saving or discarding.
- The server may need to be restarted for these changes to take effect.

Global security > JAAS - J2C authentication data

Specifies a list of user identities and passwords for Java(TM) 2 connector security to use.

Prefix new alias names with the node name of the cell (for compatibility with earlier releases)

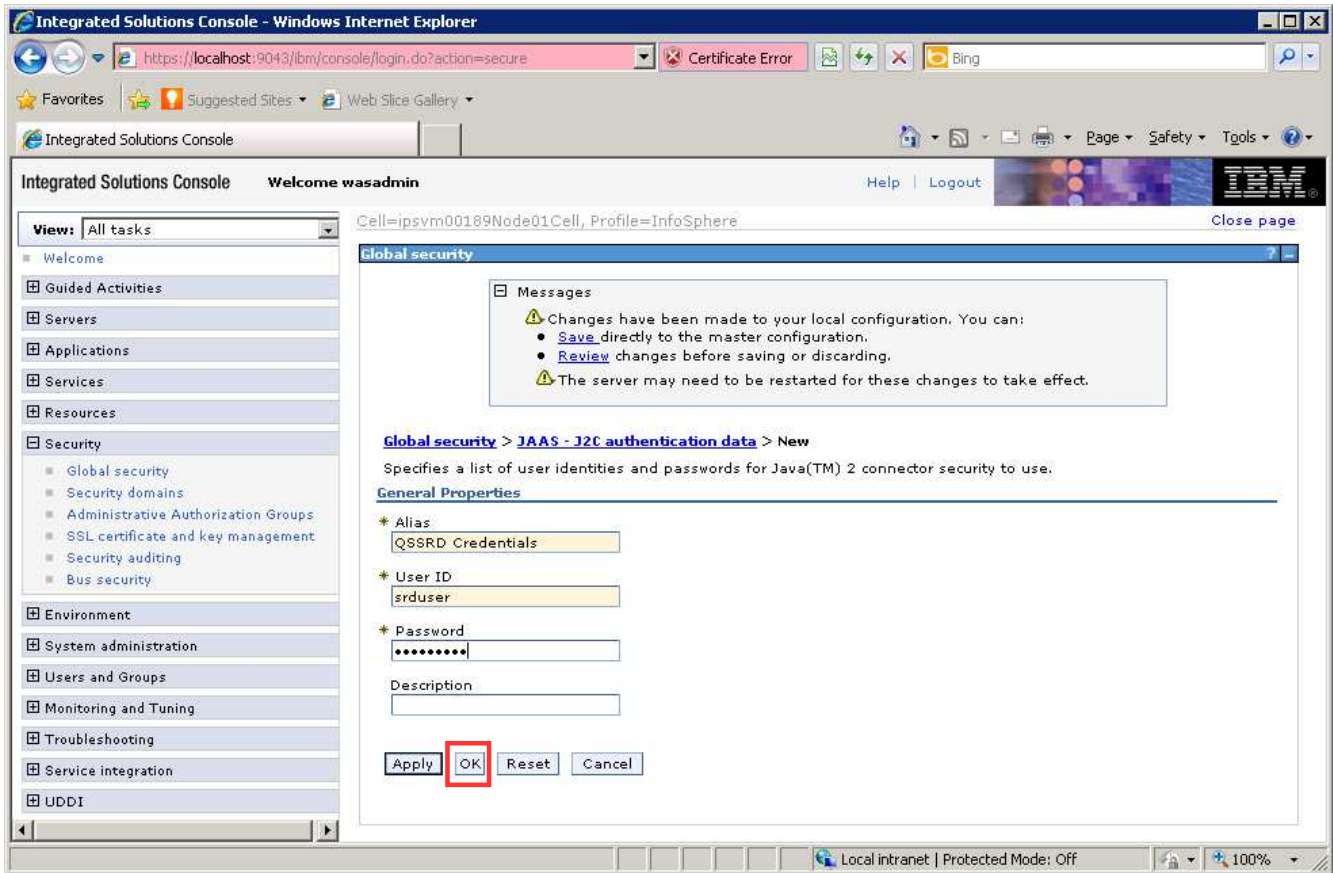
Apply

Preferences

New Delete

Select	Alias	User ID	Description
<input type="checkbox"/>	ASB_DB_user	xmeta	User account to connect to the SQL database holding the ASB repository
<input type="checkbox"/>	imamJ2eeAuthAlias	xmetasr	
Total 2			

9. Enter *QSSRD Credentials* in the **Alias** field.
10. Enter the Standardization Rules Designer database user name in the **User ID** field.
11. Enter the Standardization Rules Designer database user password in the **Password** field.
12. Enter an optional description in the **Description** field if desired.
13. Click **OK**.
14. Click **Save**.



The Standardization Rules Designer authentication data creation step is now complete.